



CLEAR LAKE STATE PARK GENERAL PLAN

JUNE 18, 2025 | STAKEHOLDER MEETING #2





Team Organization & Roles

- California State Parks Team
 - Headquarters Staff
 - Senior Park and Recreation Specialist: Katie Metraux
 - Deputy Director, Planning: Alex Stehl
 - Deputy Planning Chief: James Newland
 - Associate Park and Recreation Specialist: David Block
 - Associate Park and Recreation Specialist: Jason Finley
 - Northern Buttes District Staff
 - District Superintendent: Matt Teague
 - District Services Manager: Jared Zucker
- Consulting Team (Ascent)
 - Principal: Curtis Alling
 - Project Director: Adam Lewandowski
 - Project Manager: Kari Zajac
 - Park and Recreation Planner: Lindsay Kageyama
 - Engagement Specialist: Luis Montes
 - Environmental Planner: Nicole Greenfield

A photograph of a wooden boardwalk or bridge structure over a pond in a forest. The boardwalk is made of light-colored wood and has a decorative railing. The pond reflects the surrounding trees and foliage. The forest is lush with green trees and bushes.

Stakeholder Participation Opportunities

- Stakeholder Meeting #1 - Issues & Opportunities
- Stakeholder Meeting #2 - Alternatives & Feedback
- Review of Draft General Plan
- Review of Draft EIR
- California Native American tribal consultation

Agenda

- 1 Background
- 2 Process to Date
- 3 Concept Alternatives
- 4 Discussion/Mural Board Exercise



1

Background

Park Map



CLEAR LAKE

STATE PARK

- Park Boundary
- Park Entrance and Headquarters
- Visitor Center
- Overlook
- Campground
- Cabins
- Picnic Area
- Parking
- Boat Launch
- Swimming Beach
- Park Maintenance
- Maintenance Area
- Unpaved Multi-use Trail
- Paved Accessible Trail
- Major Road
- Paved Road
- Unpaved Road
- 40-foot Contour
- Waterways
- Wetlands
- Parcels

0 1/2 1 MILE

Esri World Hillshade/NAIP Imagery
20210027.03 GIS 003



Park Overview

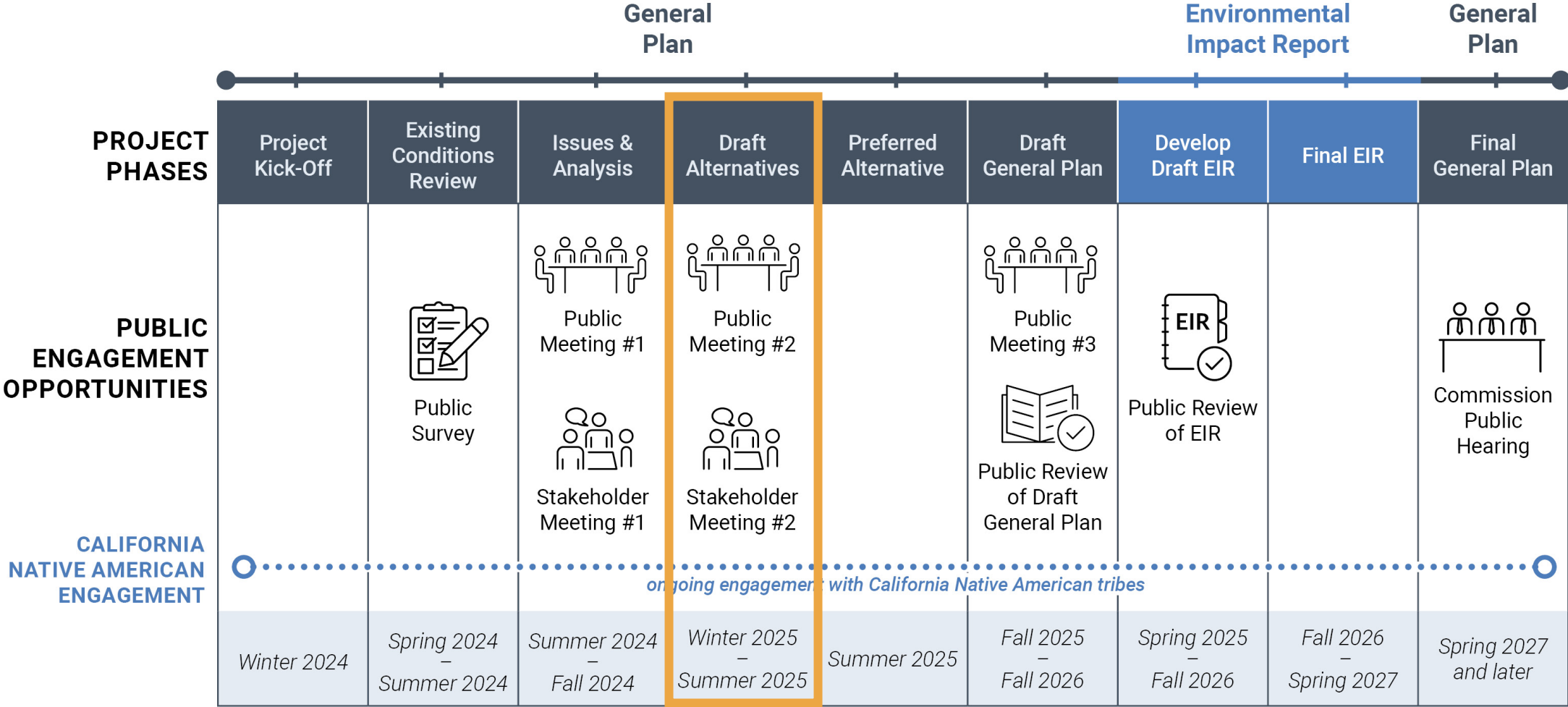
- Located on the slopes of Mount Konocti
- Many vegetation communities
- 583 acres
- 3.1 miles of shoreline
- ~89,000 visitors/year
- Facilities
 - 4 campgrounds (148 campsites total)
 - 2 group campsites
 - 8 cabins
 - 2 day-use areas
 - Visitor center
 - Educational pavilion
 - Marina and boat launch
 - 3.7 miles of hiking trails
 - Employee housing
 - Park maintenance/storage
 - Park and sector offices



2

Process to Date

Process and Schedule



WE ARE HERE

Existing Conditions



2 EXISTING CONDITIONS

2.1 Regional Land Use and Facilities

Regional Land Use

Clear Lake State Park (CLSP or park) is located within Lake County, California, in inland northern California's wine country. The park is located along the shoreline of Clear Lake, which is the county's main geographic feature and visitor destination. The lake is the largest natural lake entirely within California and is estimated to be 2.5 million years old, making it potentially the oldest freshwater lake in North America.

The region is characterized by mountainous, volcanic terrain that has limited growth to the areas along the shores of Clear Lake. A large portion of the county is public land, making up 47.7 percent of the county's land area. Mount Konnot is a prominent volcanic peak that features caves and fissures and is sacred to the California Native American tribes of the area.

Areas near to CLSP have active geothermal activity due to volcanic activity, including in the southern portion of Clear Lake around the Soda Bay hot springs. Other areas near to the park also have geothermal activity, including the Geysers in Lake, Sonoma, and Mendocino Counties, which is the largest geothermal field in the world.

Rural land use and public lands are the predominant land uses surrounding CLSP. Big Valley, to the west of CLSP, supports agricultural lands used for vineyards, orchards, and grazing land (Figure 2-1). The area immediately surrounding CLSP includes agricultural use, single family residential development, rural lands, and resource conservation.

Development patterns throughout Lake County and around Clear Lake are dispersed. CLSP is roughly equidistant between the lake-side cities of Lakeport and Clearlake, which are the only two incorporated cities within Lake County. The unincorporated community of Kelseyville is about four miles southwest of the park. Soda Bay, another unincorporated community, is on the lake 3.5 miles east of the park on the northern slopes of Mount Konnot. Other small unincorporated communities along the shores of Clear Lake include Napa, Lucerne, Glenhaven, Clearlake Oaks, Clearlake Shores, Upper Lake, and Lower Lake. Additional communities within the region include Colusa, Colusa, Colusa, Middletown, and Hopland.

There are several California Native American tribes in the area including the Big Valley Rancheria of Pomo Indians, Cachi Dehe Band of

Table 2-5 Habitat types within CLSP

CWHR	Type	Acres
Blue Oak-Foothill Pine		242.87
Blue Oak Woodland		131.45
Montane Woodland		36.54
Montane Riparian		44.30
Mixed Chaparral		31.03
Annual Grassland		23.20
Chaparral-Foothill Pine		15.31
Valley Oak Woodland		13.51
Landslide		10.11
Orchard		6.75
Riverine		4.68
Pasture		1.09
Grand Total		582.85

* California Wildlife Habitat Relationships System

The vegetation types in CLSP provide habitat for common wildlife species, such as western gray squirrel (*Sciurus griseus*), California ground squirrel (*Otospermophilus beecheyi*), mule deer (*Odocoileus hemionus*), wild turkeys (*Meleagris gallopavo*), American robin (*Turdus migratorius*), northern flicker (*Colaptes auratus*), belted kingfisher (*Megascops asio*), western gull (*Larus occidentalis*), American osprey (*Pandion haliaetus*), wood duck (*Aix sponsa*), turkey vulture (*Cathartes aura*), red shouldered hawk (*Buteo lineatus*), and various frog and turtle species. CLSP provides abundant nesting habitat for birds throughout its various woodland habitats, which include a great blue heron (*Ardea herodias*) colony in the riparian forest adjacent to Kelsey Creek. CLSP also contains man-made structures for wildlife nesting, such as the osprey nest platform near the boat launch, wood duck nest boxes along Kelsey Creek, and the bat box near the visitor center.



Sensitive Biological Resources

Special Status Plants

Three special status plant species have been documented in CLSP: *Konnotia manzanita* (*Arctostaphylos manzanita* ssp. *elaeagnifolia*), *Calistoga ceanothus* (*Ceanothus divaricatus*), and *Napa blue oak* (*Quercus laevis*). These species are not listed under the California Endangered Species Act, however, they are endemic to California and are considered rare throughout their range.

Konnotia manzanita is known from volcanic soils that occur in blue oak-foothill pine habitat in central and eastern CLSP (CNDG 2024) and often co-occurs with common *manzanita*. Habitat for *Konnotia manzanita* is extensive throughout CLSP in the blue oak-foothill pine woodland, blue oak woodland, and chaparral habitats that dominate the upland portions of the park. In CLSP, *Calistoga ceanothus* is only known to occur at a restoration planting area south of Soda Bay Road in CLSP, within mixed chaparral habitat (CND 2024). Other chaparral habitats that contain volcanic soils in the southern, less accessible portion of CLSP may also provide habitat for *Calistoga ceanothus*. *Napa blue oak* was included on a CLSP plant list provided by State Parks (Dean et al. 2013), however, the location and habitat information are unknown. Openings in chaparral and blue oak-foothill pine woodland habitat in CLSP provide habitat for *Napa blue oak*.



Figure 2-18 Floodplains

2-1 CLEAR LAKE STATE PARK GENERAL PLAN

2-60 CLEAR LAKE STATE PARK GENERAL PLAN

2-97 CLEAR LAKE STATE PARK GENERAL PLAN

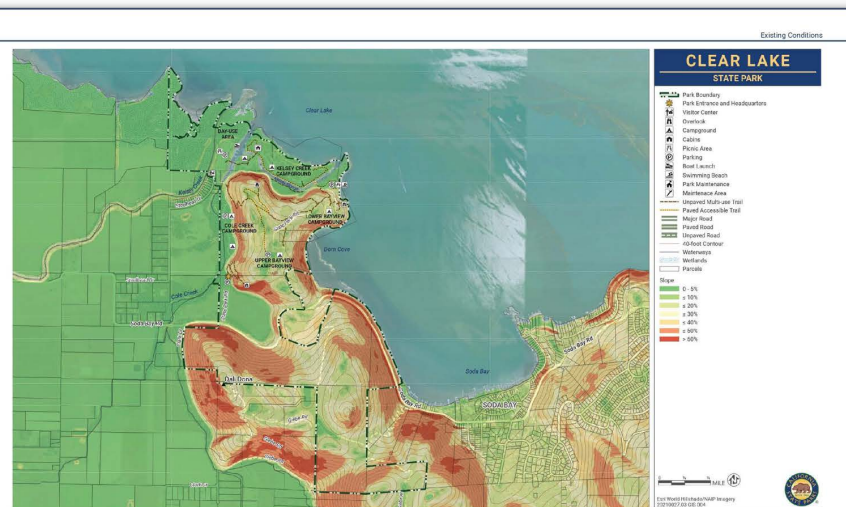
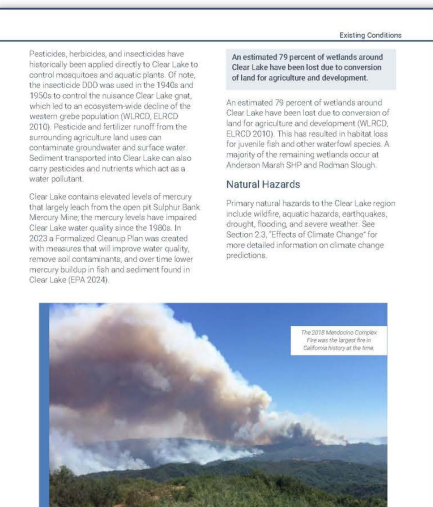
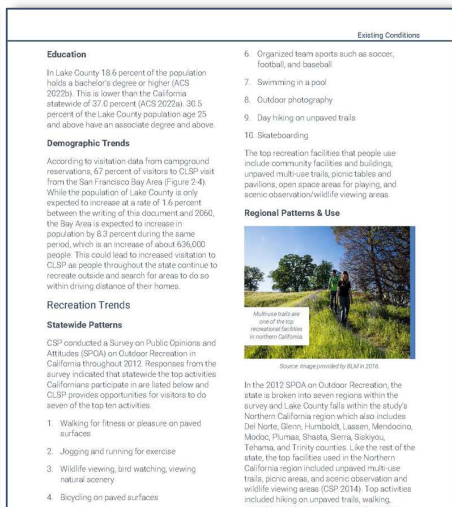


Figure 2-11 Slope Map

2-97 CLEAR LAKE STATE PARK GENERAL PLAN



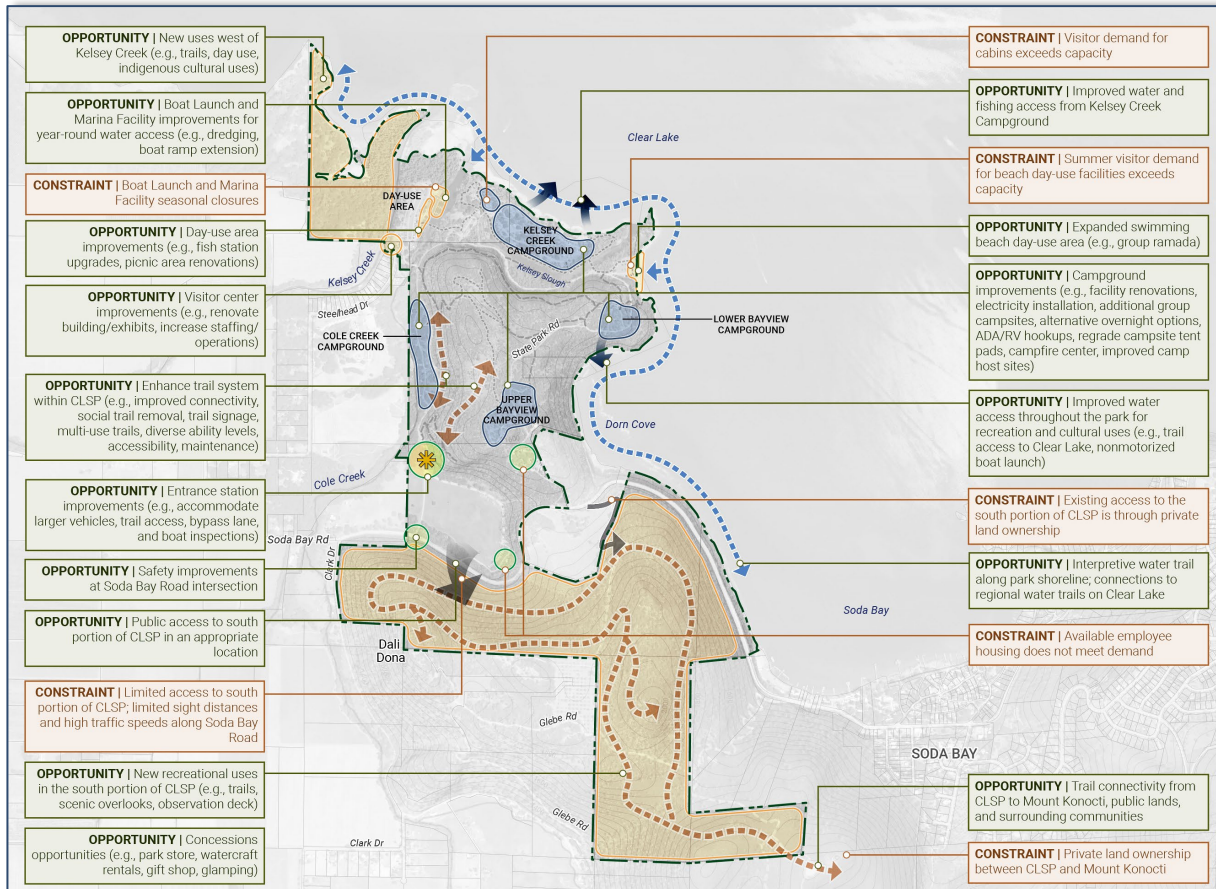
2-14 CLEAR LAKE STATE PARK GENERAL PLAN



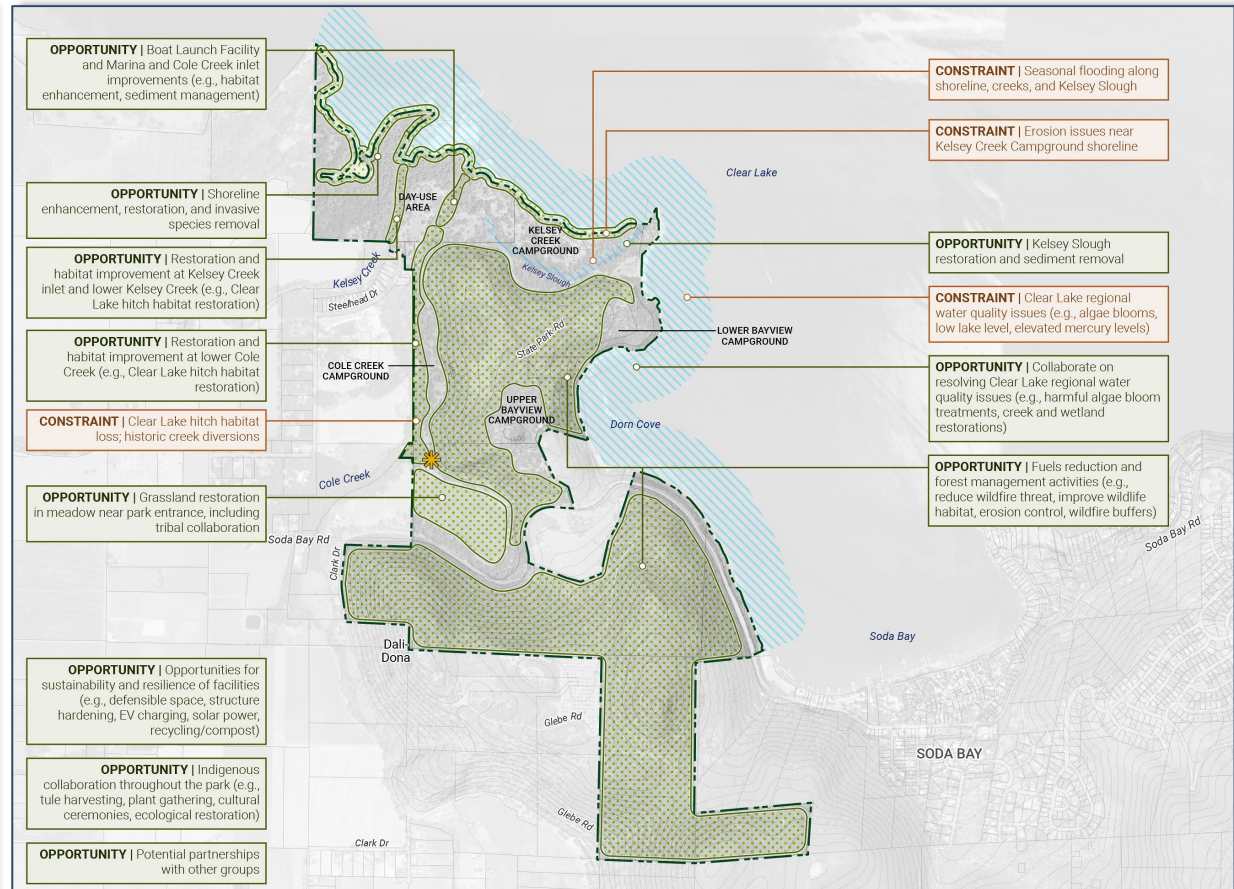
2-68 CLEAR LAKE STATE PARK GENERAL PLAN

Issues and Analysis

Recreation and Park Operations Opportunities and Constraints



Resource Management Opportunities and Constraints





Issues

VISITOR EXPERIENCE AND RECREATION

- Providing adequate day-use recreation
- Accommodating demand for overnight use
- Limited trail system
- Water access limitations
- Improving universal accessibility
- Outdated information, education, and interpretation
- Serving disadvantaged communities
- Adjacent private land ownership



Issues

INFRASTRUCTURE, FACILITIES, AND PARK OPERATIONS

- Flooding at park facilities
- Park access limitations
- Staffing and funding limitations
- Promoting public safety



Issues

RESOURCE MANAGEMENT

- Harmful algal blooms in Clear Lake
- Impairment of wetlands and hydrology
- Heightened wildfire risk
- Conservation of sensitive natural resources
- Threats from invasive species
- Protection of cultural resources
- Collaborative stewardship with tribes



Issues

CLIMATE CHANGE

- Adapting to rising temperatures and extreme heat
- Adapting to extreme precipitation, flooding, and drought
- Adapting to climate-driven increases in wildfire
- Reducing greenhouse gas emissions from operations



Issues

AREA-SPECIFIC ISSUES

- Lack of public access south of Soda Bay Road
- Sedimentation at the boat launch and marina facility
- Outdated visitor center and sector office

Are there other major issues that should be addressed in the General Plan?

Public Engagement

- Online survey
 - 476 English responses
 - 3 Spanish responses
- Community Workshop #1



44

Percent of public survey respondents would like to see a more extensive trail system at CLSP

47

Percent of public survey respondents would like to see restoration projects for sensitive species habitat at CLSP

43

Percent of public survey respondents say concerns about Clear Lake water quality keep them from visiting the park more often

35

Percent of public survey respondents would like to see more nighttime programming

39

Percent of public survey respondents would like to see a non-motorized boat launch in the park

Planning Charrettes

- Planning Charrette #1: Development of alternative themes
- Planning Charrette #2: Development of the three concept alternatives





3

Concept Alternatives

Management Actions for All Alternatives

- Forest management
- Cultural resource management
- Water quality improvements
- Interpretation and education
- Operations and maintenance projects
- Interagency coordination
- Tribal collaboration with Big Valley Band of Pomo Indians



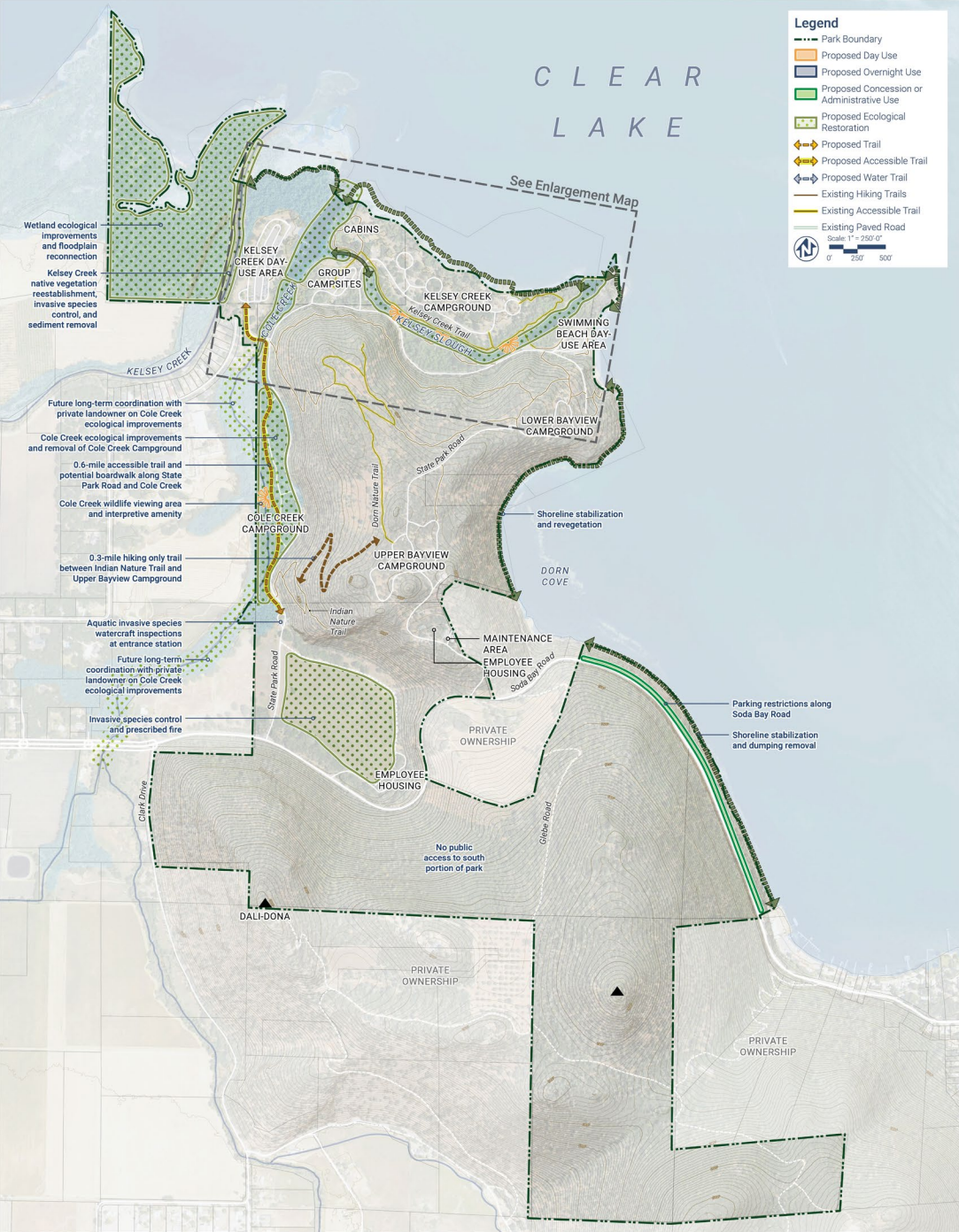
Alternatives Overview



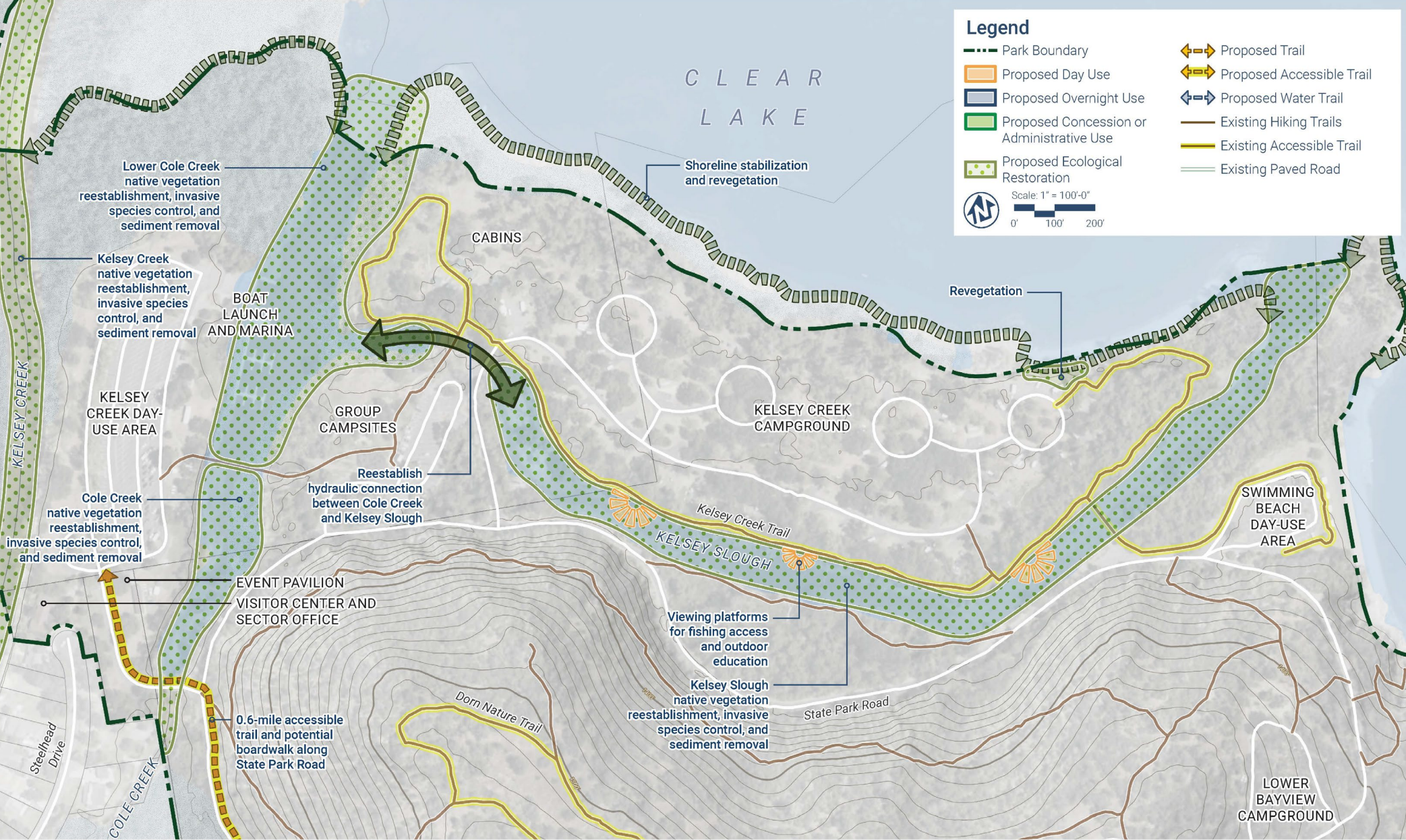
Resource Management Emphasis Alternative

Summary of Improvements

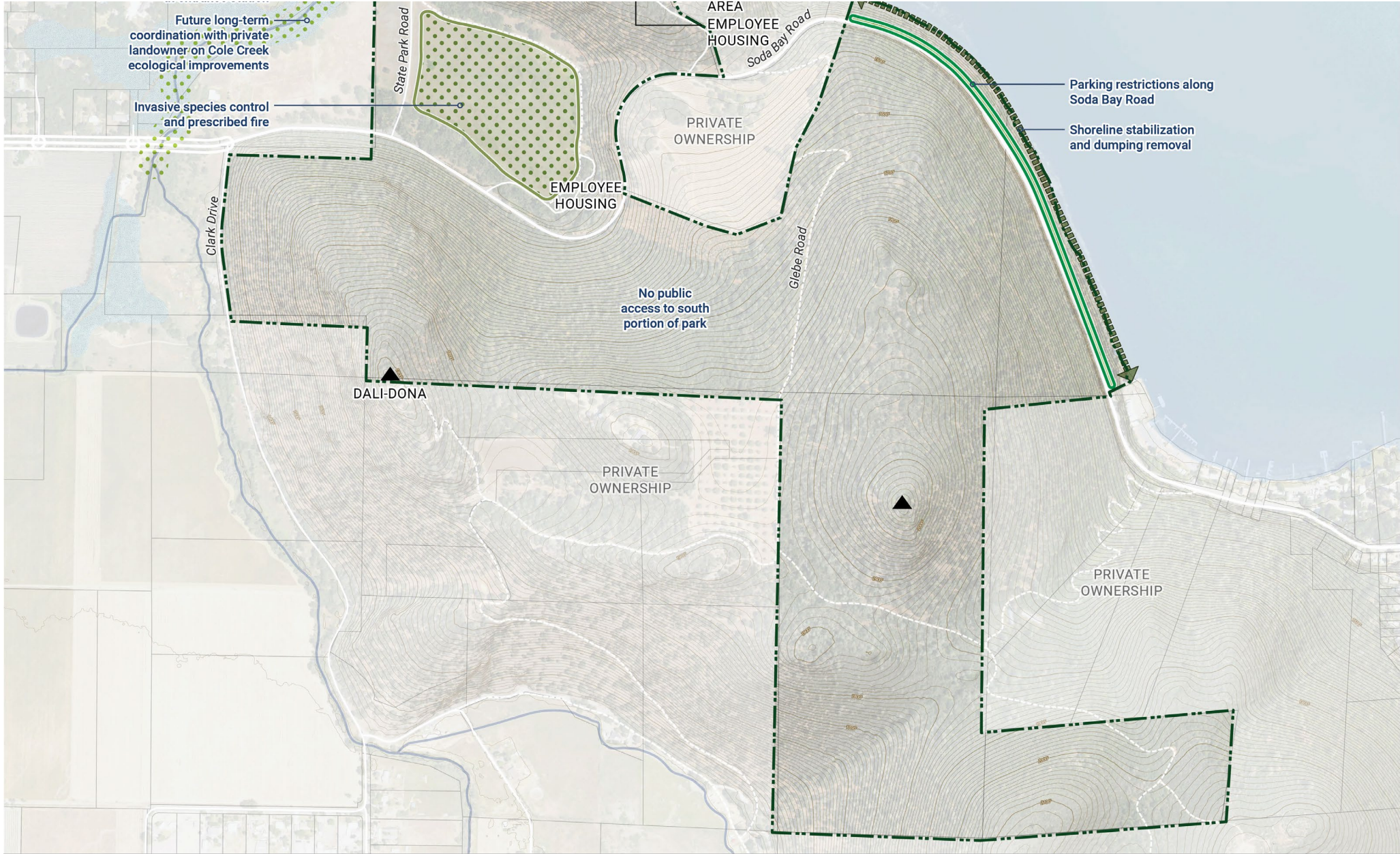
Day Uses	<ul style="list-style-type: none">2 locations for new/improved water access and viewing
Overnight Uses	<ul style="list-style-type: none">Removal of Cole Creek Campground and ecological improvements to Cole Creek
Administrative Uses	<ul style="list-style-type: none">None
Trails	<ul style="list-style-type: none">0.6 miles accessible trails0.3 miles hiking only trails
Resource Management Actions	<ul style="list-style-type: none">61 acres creek/wetland ecological improvements17 acres meadow restoration1.9 miles shoreline stabilization



Resource Management Emphasis Alternative | Enlargement



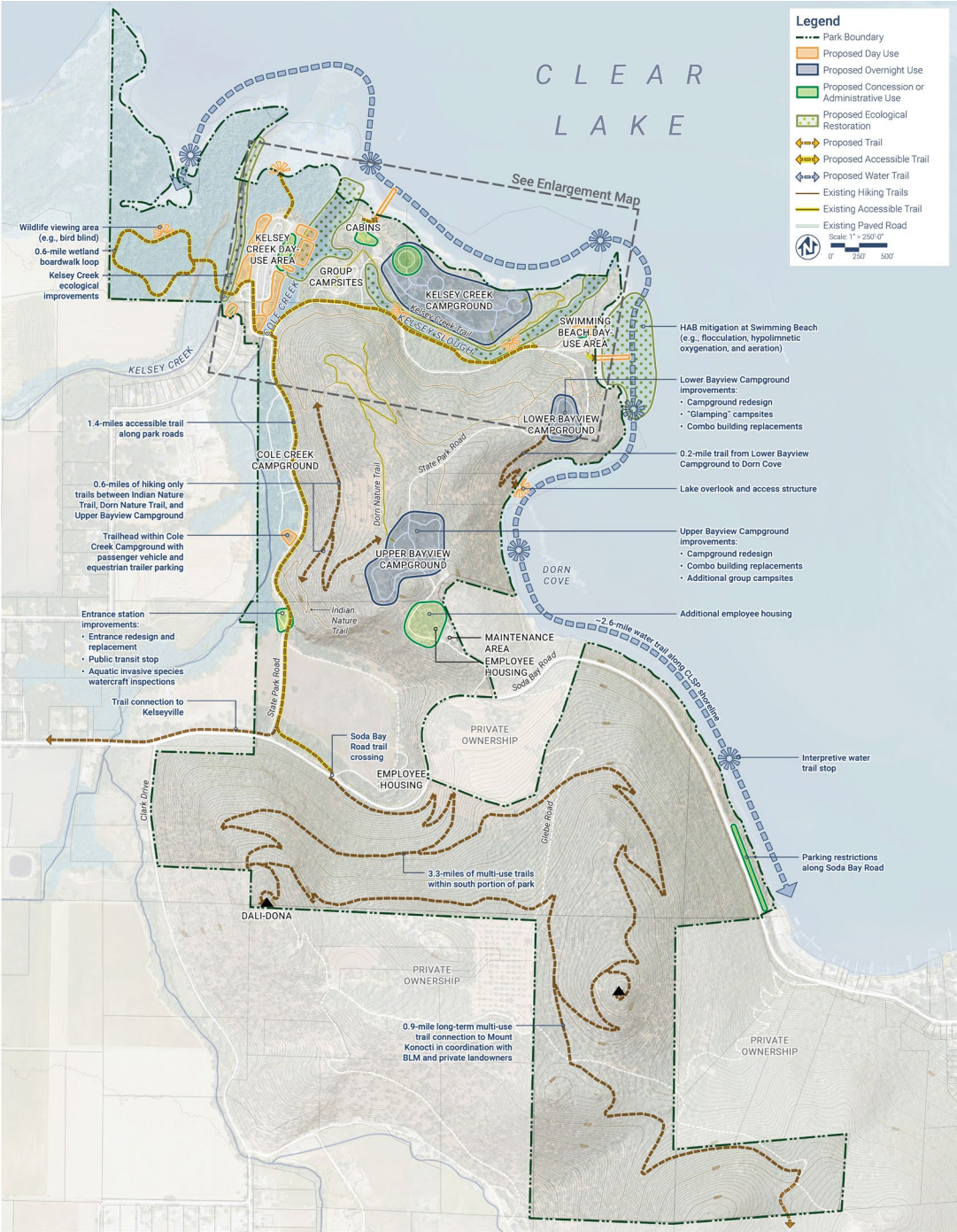
Resource Management Emphasis Alternative | Enlargement



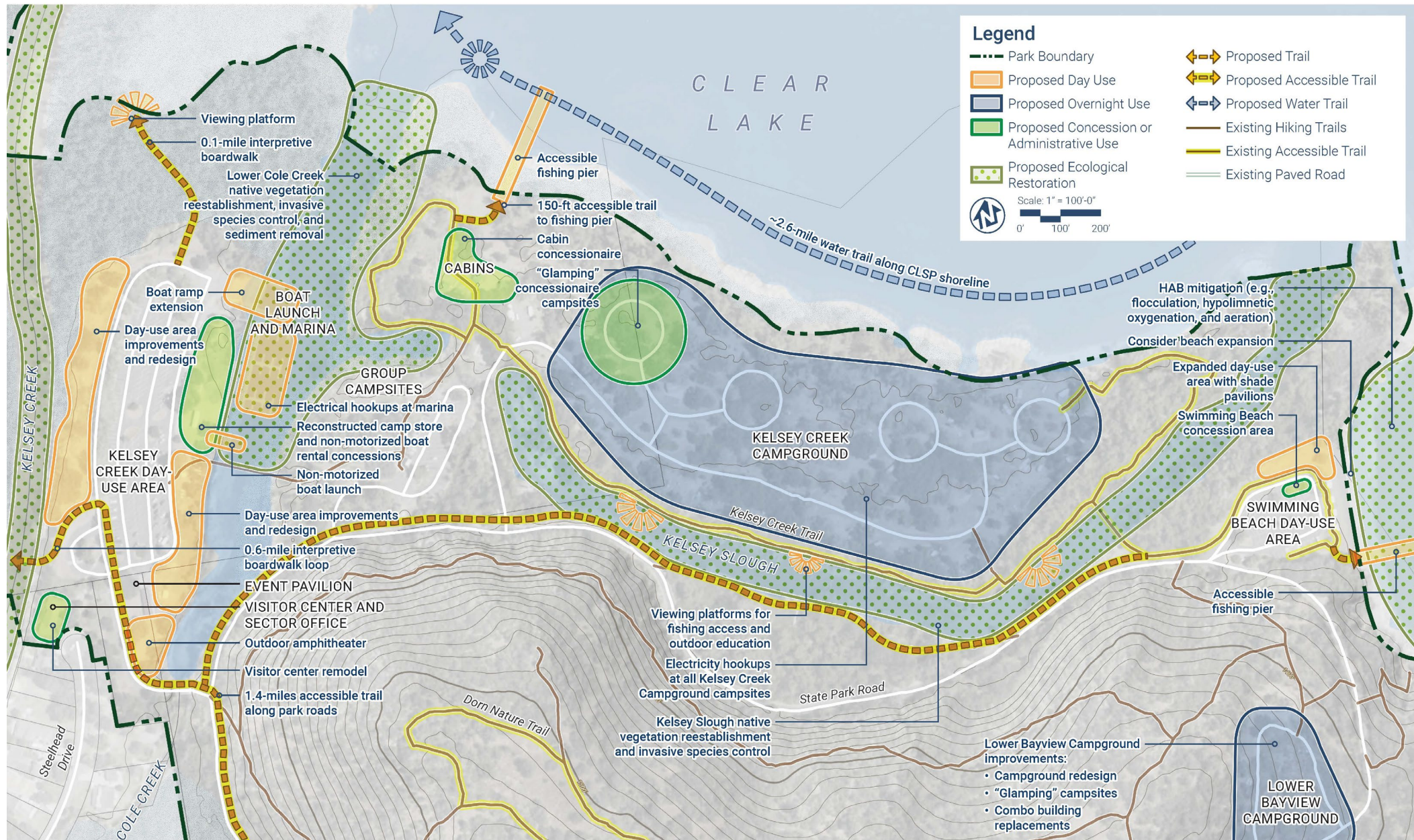
Recreation Emphasis Alternative

Summary of Improvements

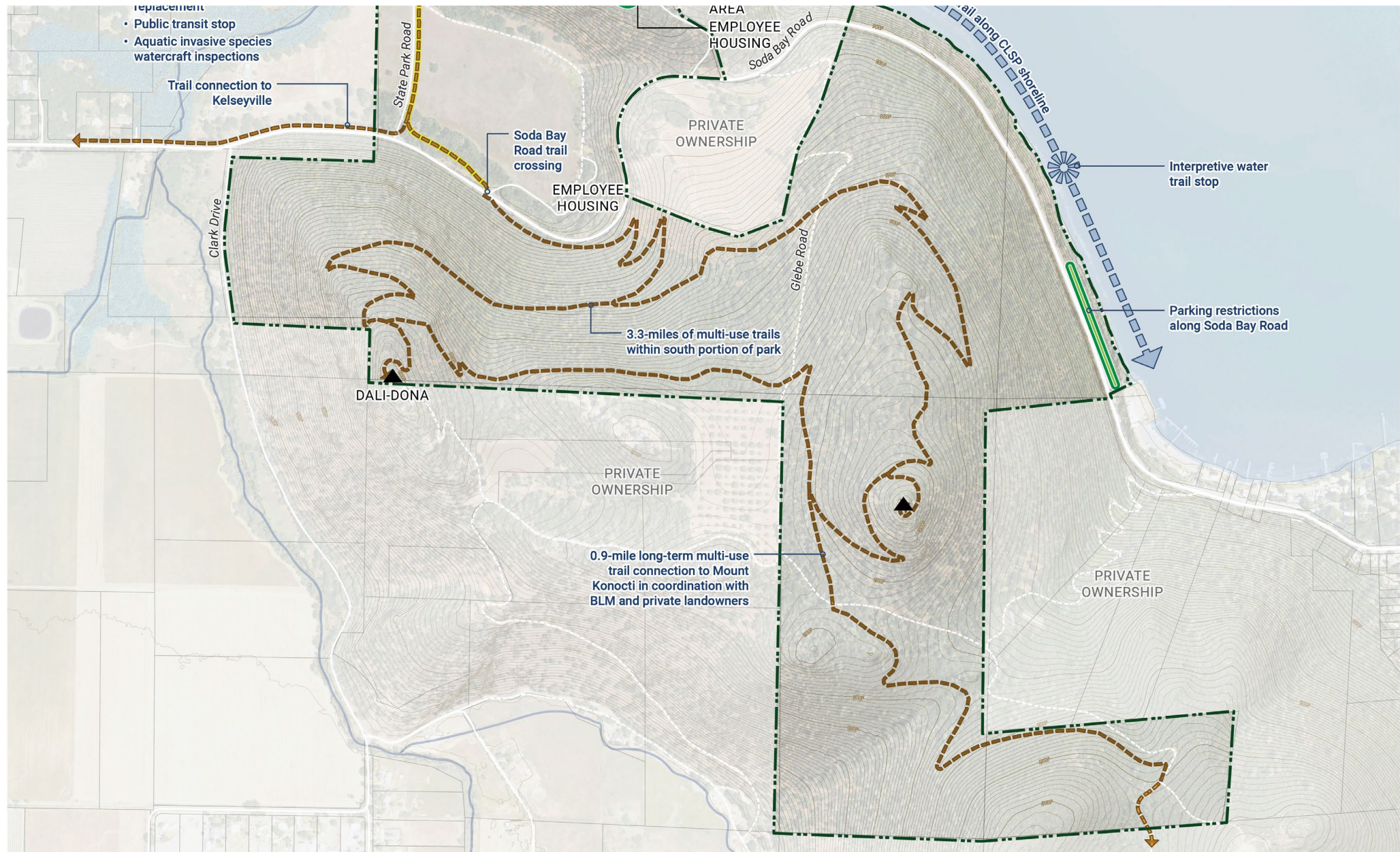
Day Uses	<ul style="list-style-type: none">Improvements at Kelsey Creek Day-use Area, Swimming Beach Day-use Area, and visitor center1 new trailhead parking area6 locations for new/improved lake access and viewing
Overnight Uses	<ul style="list-style-type: none">Kelsey Creek, Lower Bayview, and Upper Bayview Campground improvementsNew overnight accommodations: hookups, “glamping”, group camping
Administrative Uses	<ul style="list-style-type: none">Concessionaire at Kelsey Creek Campground, cabins, camp store, and boat rentalsAdditional employee housingEntrance station improvements
Trails	<ul style="list-style-type: none">2.1 miles accessible trails0.8 miles hiking only trails4.2 miles multi-use trails2.6-mile water trailTrail connections to Kelseyville and Mount Konocti
Resource Management Actions	<ul style="list-style-type: none">14 acres creek ecological improvements



Recreation Emphasis Alternative | Enlargement



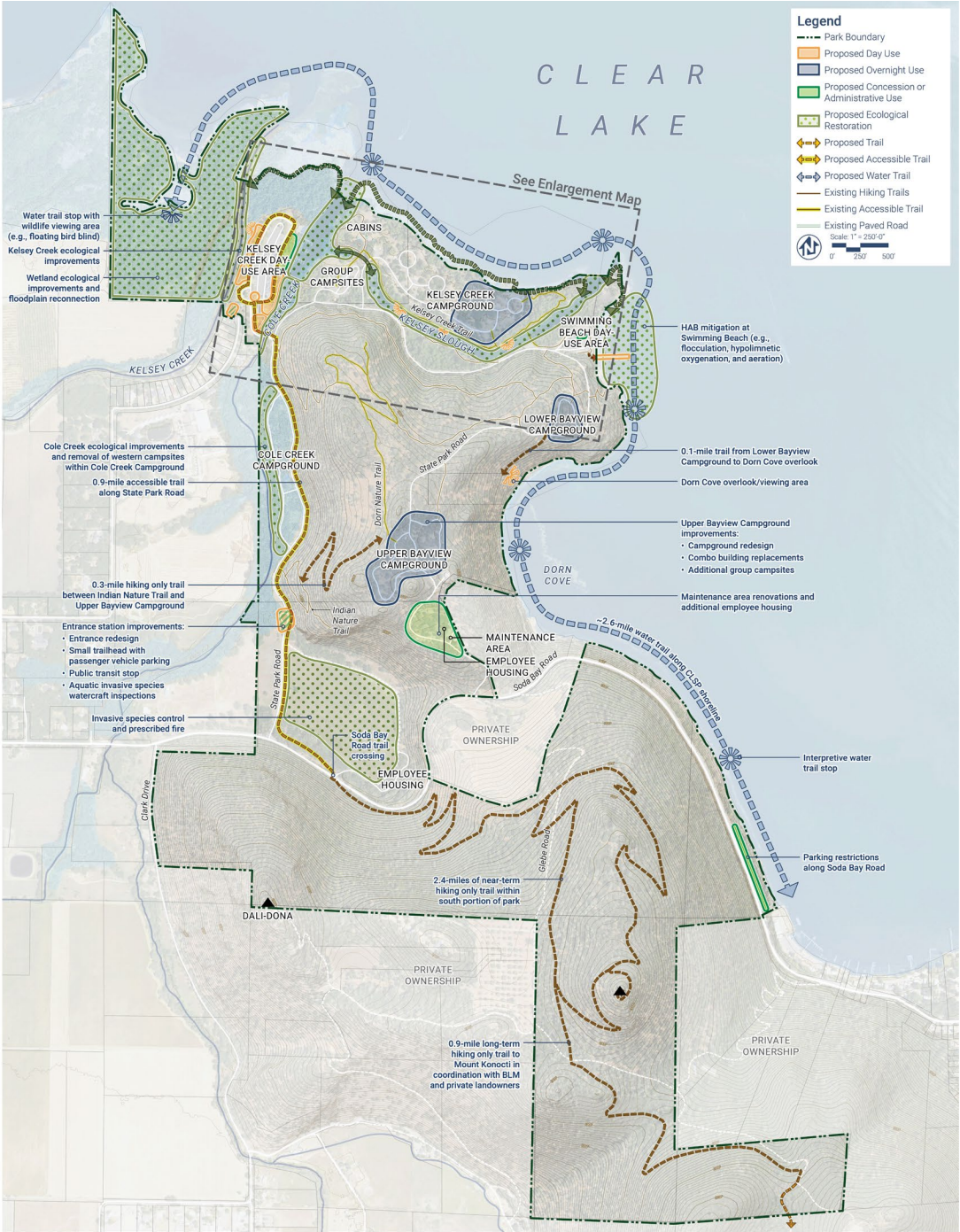
Recreation Emphasis Alternative | Enlargement



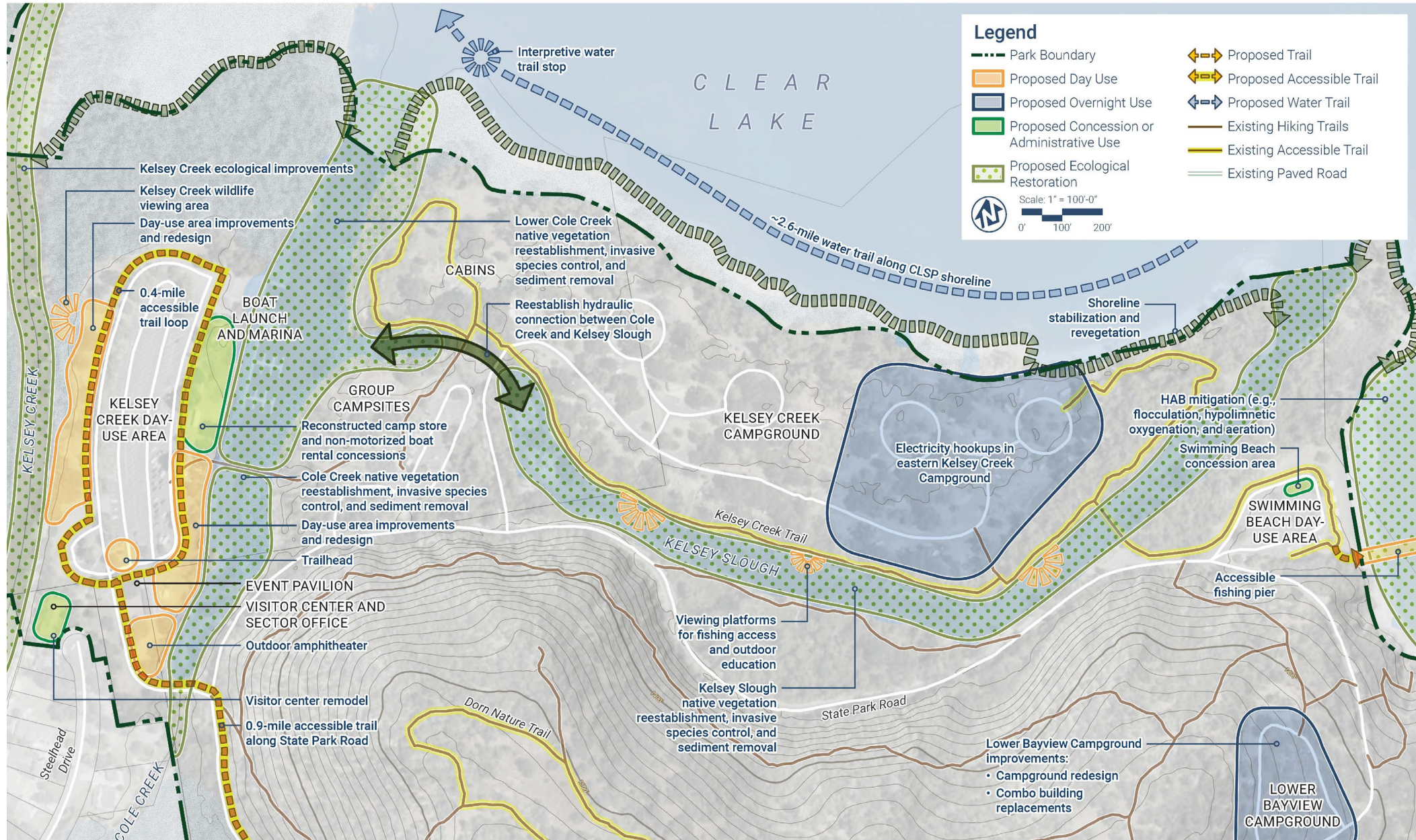
Blended Recreation & Resource Alternative

Summary of Improvements

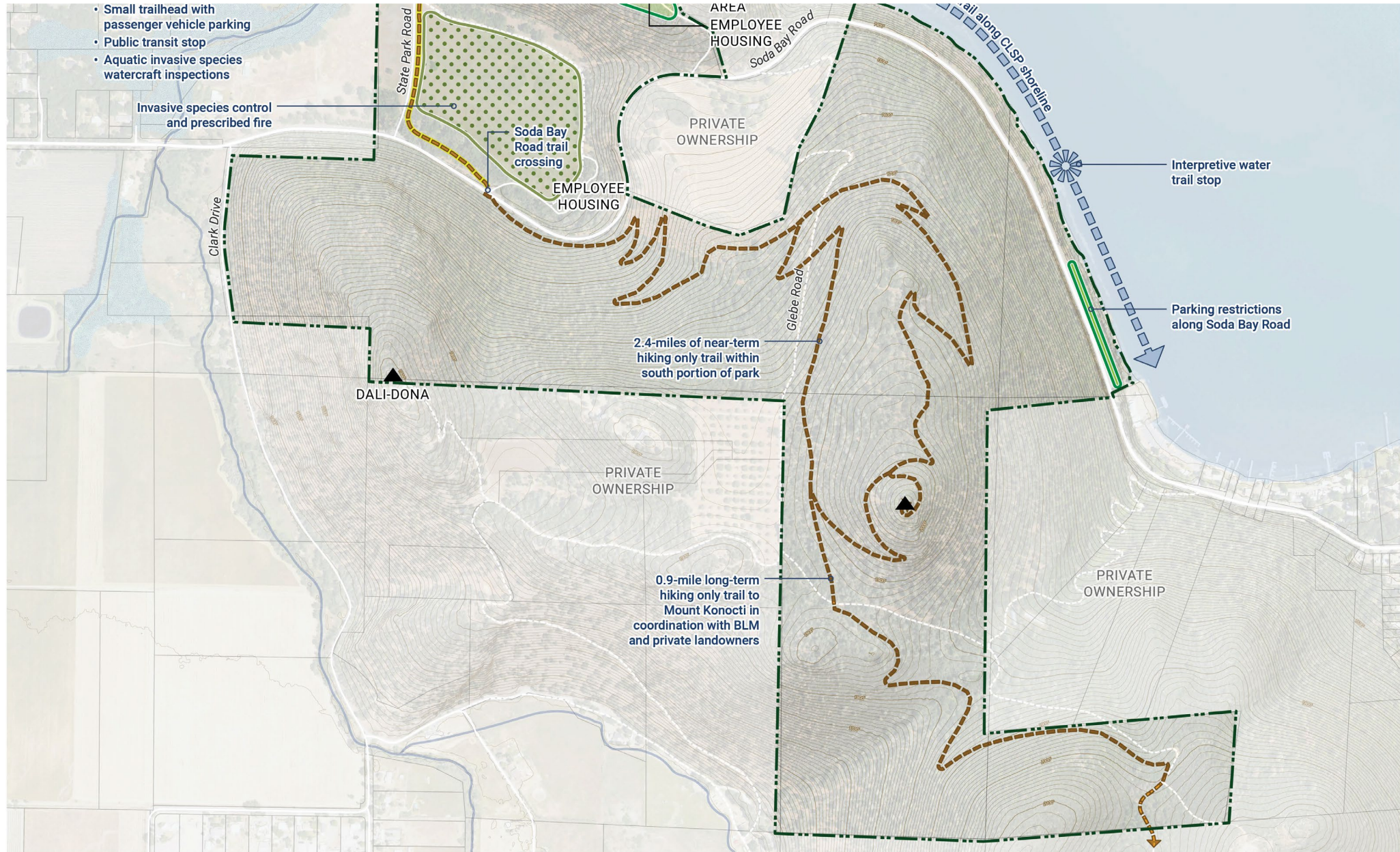
Day Uses	<ul style="list-style-type: none">Improvements at Kelsey Creek Day-Use Area and visitor center2 locations for trailhead improvements3 locations for new/improved lake access and viewing
Overnight Uses	<ul style="list-style-type: none">Partial removal of Cole Creek Campground and ecological improvements to Cole CreekNew overnight accommodations: hookups and group camping
Administrative Uses	<ul style="list-style-type: none">Concessionaire at camp store and boat rentalsAdditional employee housing and maintenance improvementsEntrance station improvements
Trails	<ul style="list-style-type: none">1.3 miles accessible trails3.7 miles hiking only trails2.6-mile water trailTrail connection to Mount Konocti
Resource Management Actions	<ul style="list-style-type: none">53 acres creek/wetland ecological improvements17 acres meadow restoration0.8 miles shoreline stabilization



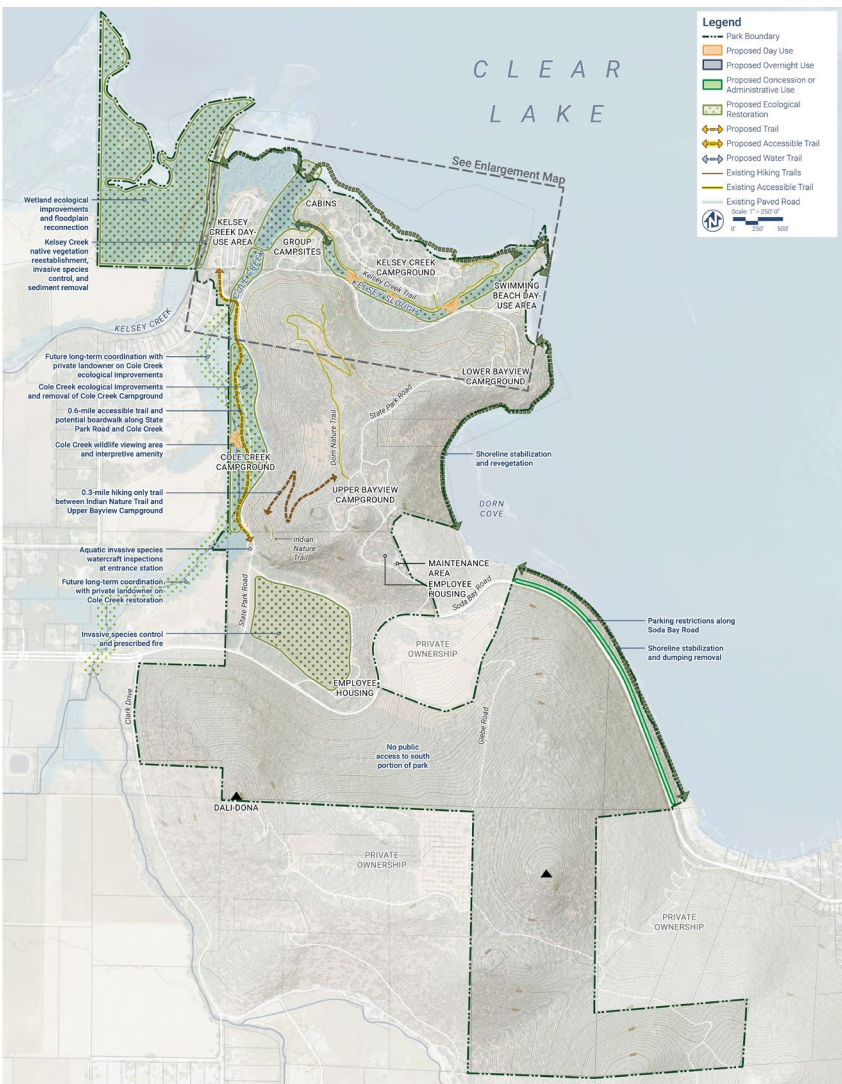
Blended Recreation & Resource Alternative | Enlargement



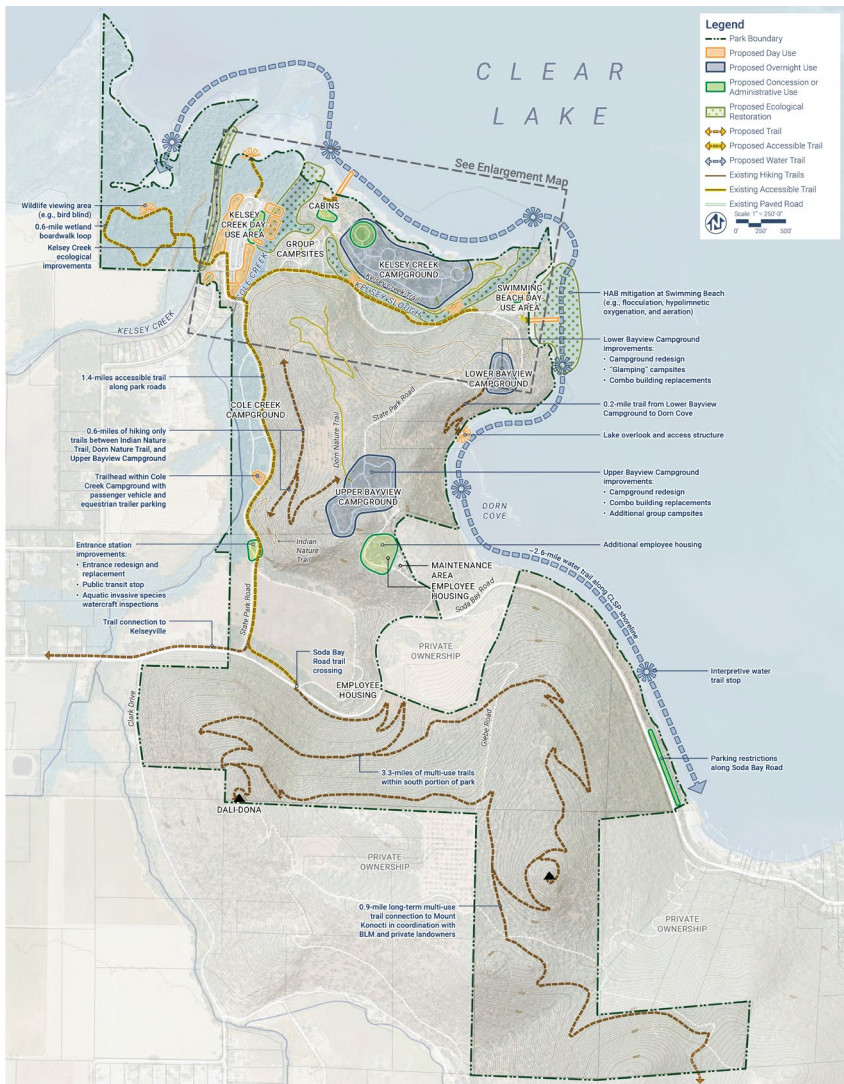
Blended Recreation & Resource Alternative | Enlargement



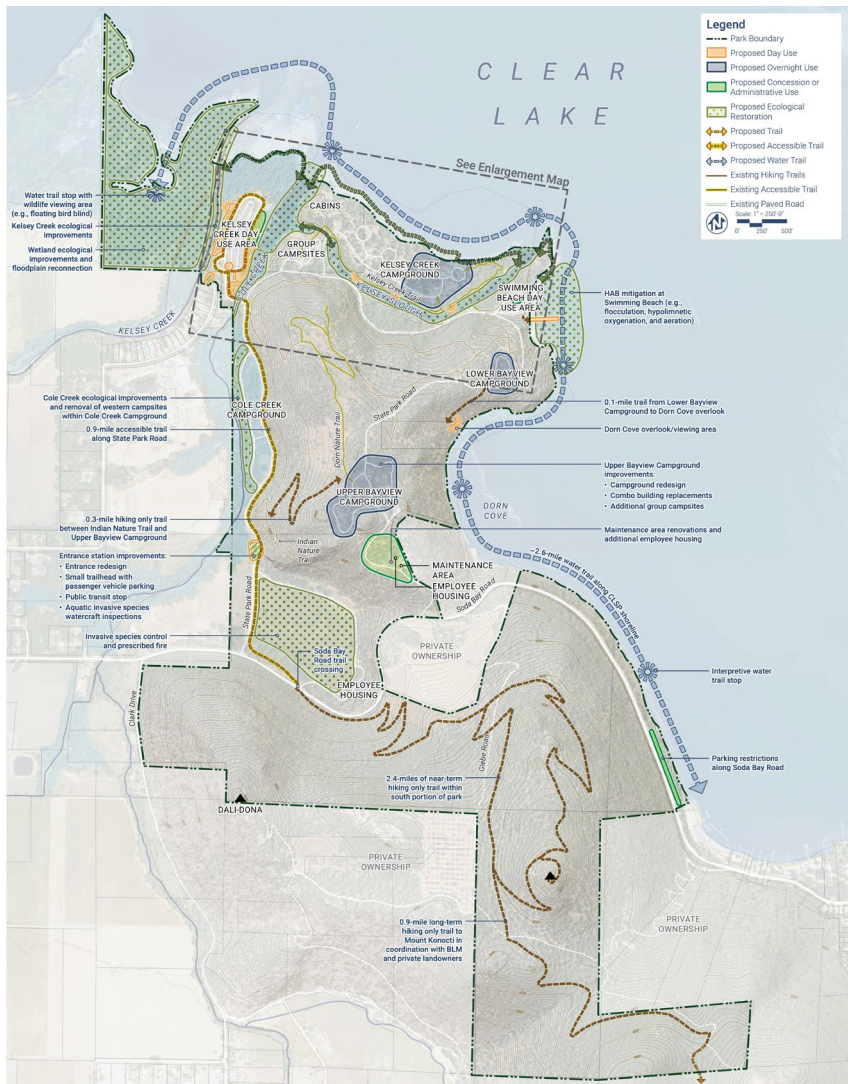
Resource Management Emphasis Alternative



Recreation Emphasis Alternative



Blended Recreation & Resource Management Alternative



Based on what you know so far, is there an alternative that you prefer?

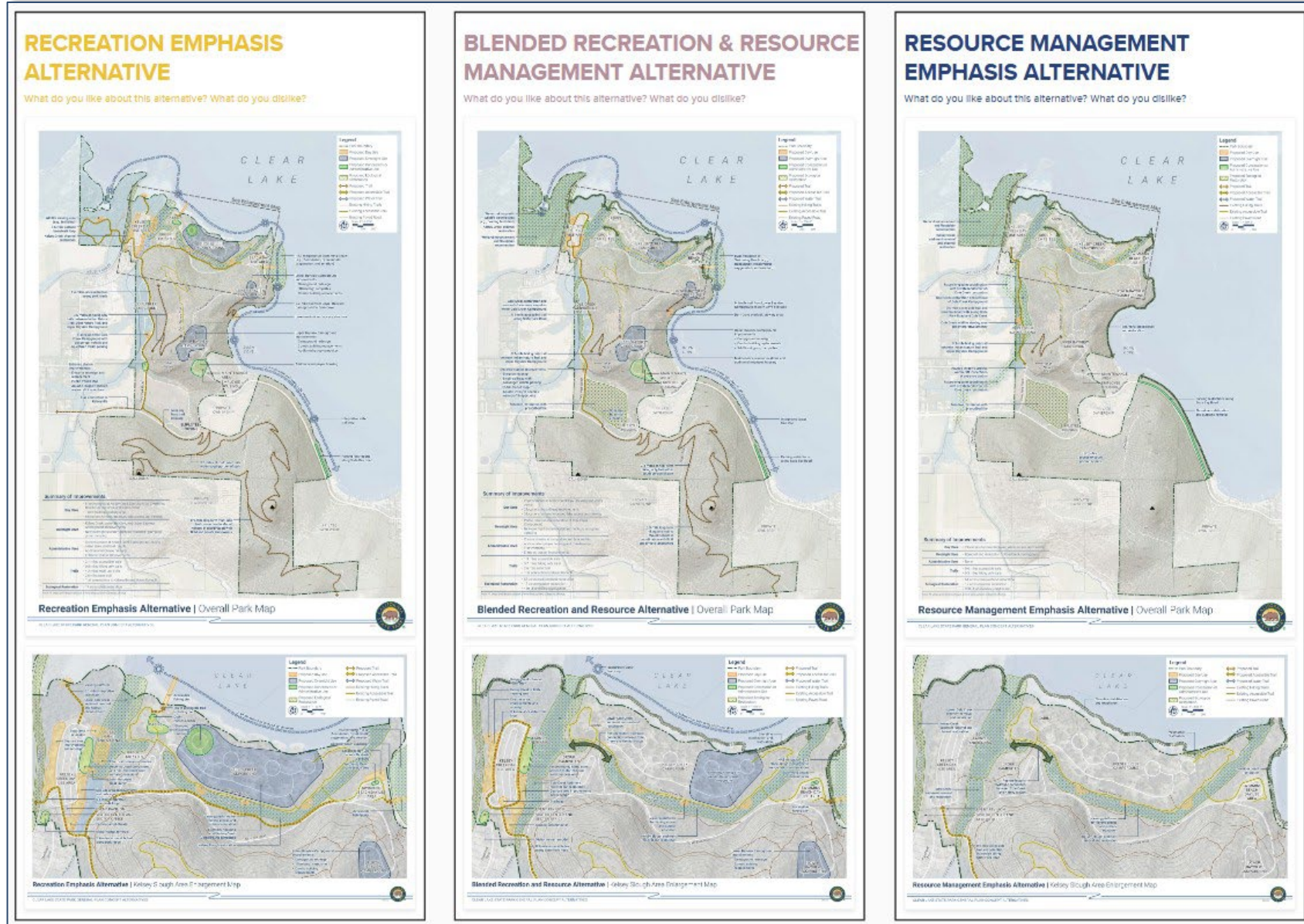
4

Discussion/Mural Board Exercise

Mural Board Exercise

Discuss what you like and dislike about each of the three alternatives. Input will be used to create the preferred alternative for the General Plan.

We will have 50 minutes for this exercise.



Stay Engaged

VISIT www.parks.ca.gov/clsp_gp
or scan the QR code

QUESTIONS? Contact
clearlakegp@parks.ca.gov



THANK YOU

